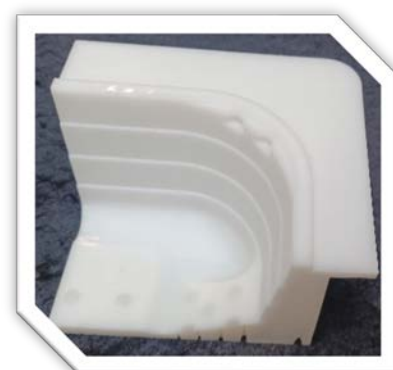
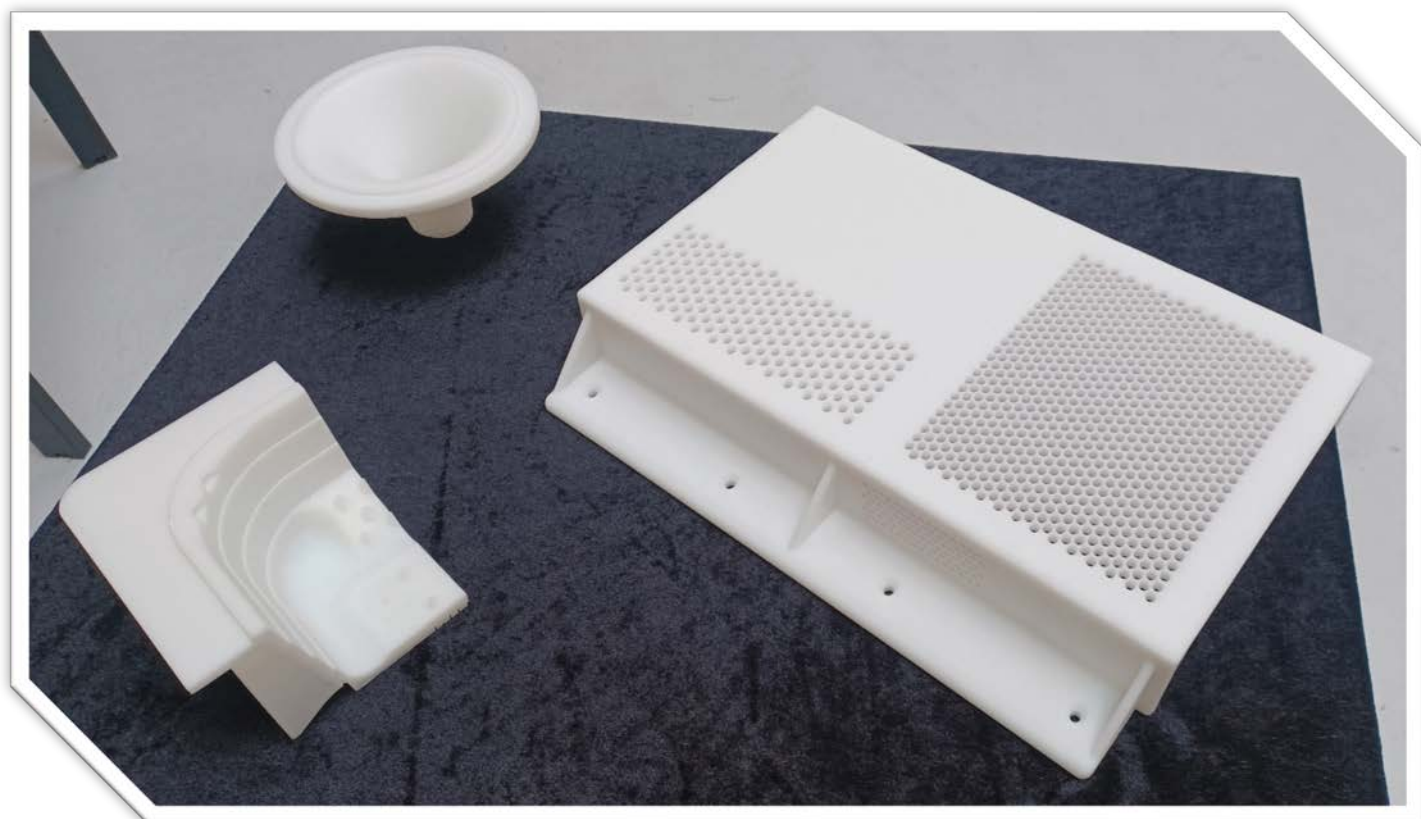


# TECHNICAL DATA

## TEC355 - White



## Material Overview

TEC355 - White (Wavelength 355nm) is the most popular SLA resin for accurate, detailed parts, perfect for testing model designs to ensure proper structure and function before full production. It produces white ABS like parts with accurate, durable and moisture resistant features. It's ideal for prototyping and functional testing, saving time, money and material during product development.

## Advantages

- Highly accurate and strong toughness
- Highly durable
- Fine surface texture
- Good moisture resistance
- Easy to clean and finish

## Ideal Applications

- Functional prototypes
- Concept models
- Low volume production models
- Automotive, aerospace, architecture, and electronic applications

## Technical Datasheet

Liquid Properties		Optical Properties	
<b>Appearance</b>	Opaque White	<b>Dp</b>	0.135-0.155 mm
<b>Viscosity</b>	355-455 cps @ 28 °C	<b>Ec</b>	9-12 mJ/cm <sup>2</sup>
<b>Density</b>	1.11-1.14g/cm <sup>3</sup> @ 25 °C	<b>Building layer thickness</b>	0.05-0.15mm

Mechanical Properties		UV Postcure
Measurement	Test Method	Value
<b>Hardness, Shore D</b>	ASTM D 2240	76-82
<b>Flexural modulus, Mpa</b>	ASTM D 790	2,690-2,775
<b>Flexural strength, Mpa</b>	ASTM D 790	68-75
<b>Tensile modulus, MPa</b>	ASTM D 638	2,180-2,395
<b>Tensile strength, MPa</b>	ASTM D 638	27-31
<b>Elongation at break</b>	ASTM D 638	12-20%
<b>Impact strength, notched Izod, J/m</b>	ASTM D 256	58-70
<b>Heat deflection temperature, °C</b>	ASTM D 648 @66PSI	55-65
<b>Glass transition, Tg, °C</b>	DMA, E"peak	55-70
<b>Density, g/cm<sup>3</sup></b>		1.14-1.16

Recommended temperature for processing and storage of the above resin should be 18°C-25°C.

The above data are based on our current knowledge and experience, the values of which may vary and depend on individual machine processing and post-curing practices. The safety data given in above is for information purposes only and does not constitute a legally binding MSDS. The relevant MSDS can be obtained upon request from your supplier or you may contact Teccluster A/S directly at "info@teccluster.com"